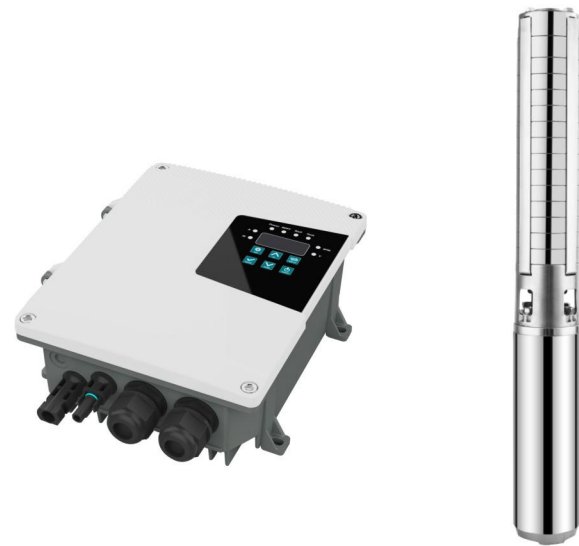
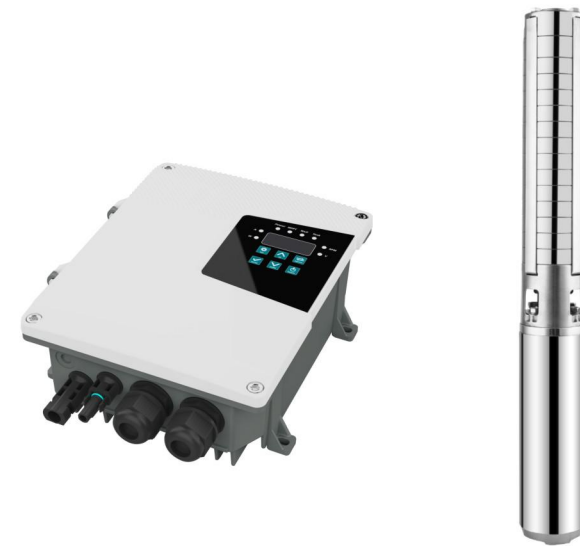


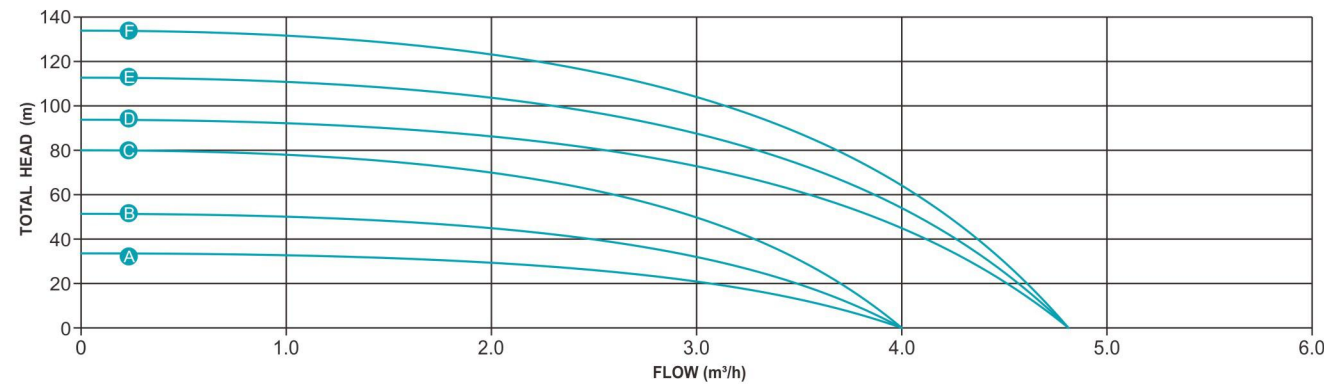
S3SW Solar Submersible Pump



S4SW Solar Submersible Pump

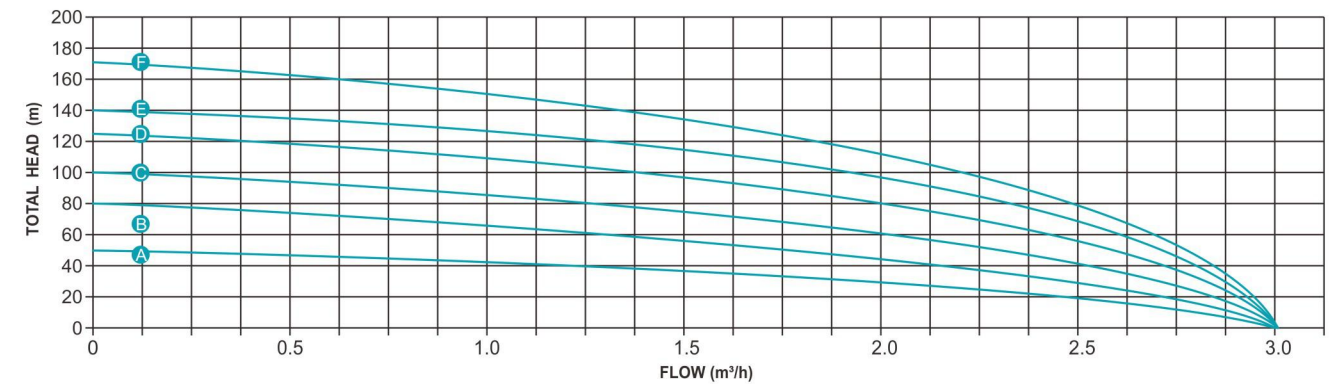


Performance Curve And Table



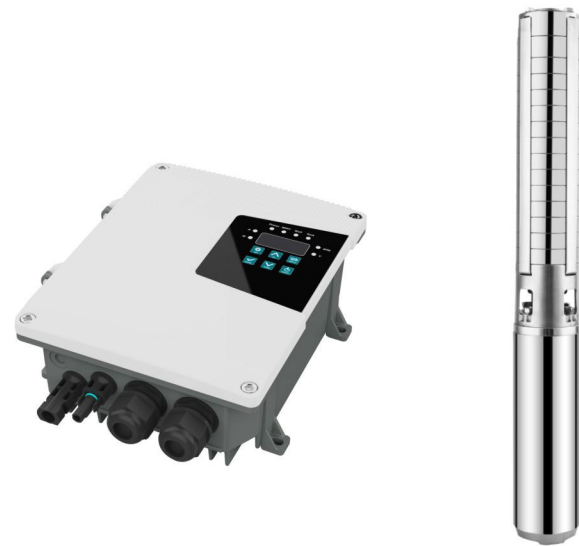
No.	Model	Voltage	Optimum input voltage(DC)	Power	Max. flow	Max. head	Outlet	Cable	Solar panel	
									Open circuit voltage (VOC)	Power
A	S3SW4-35-24-300	24V	30-48V	300W	4.0m³/h	35m	1.25"	2m	<50V	≥1.3*PUMP POWER
B	S3SW4-50-48-400	48V	60-90V	400W	4.0m³/h	50m	1.25"	2m	<100V	≥1.3*PUMP POWER
C	S3SW4-80-48(72)-600	48(72)V	60-90V (72-120V)	600W	4.0m³/h	80m	1.25"	2m	<100(150)V	≥1.3*PUMP POWER
D	S3SW4-8-95-72(96)-750	72(96)V	90-120V (110-150V)	750W	4.8m³/h	95m	1.25"	2m	<150(200)V	≥1.3*PUMP POWER
E	S3SW4-8-112-110(150)-1100	110(150)V	110-150V (150-200V)	1100W	4.8m³/h	112m	1.25"	2m	<200(300)V	≥1.3*PUMP POWER
F	S3SW4-8-135-110(200)-1500	110(200)V	110-150V (200-300V)	1500W	4.8m³/h	135m	1.25"	2m	<200(400)V	≥1.3*PUMP POWER

Performance Curve And Table

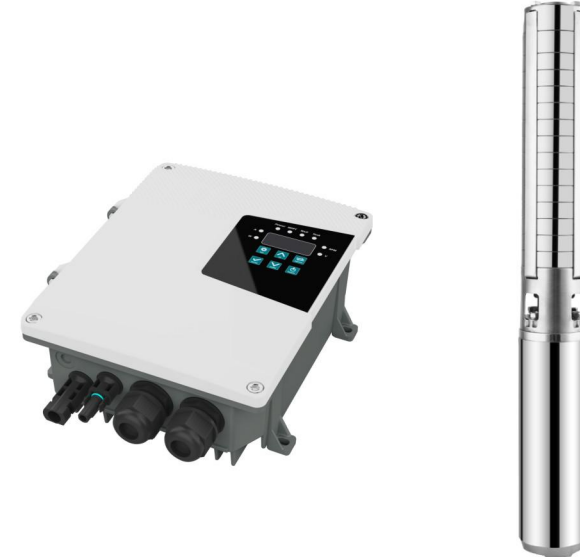


No.	Model	Voltage	Optimum input voltage(DC)	Power	Max. flow	Max. head	Outlet	Cable	Solar panel	
									Open circuit voltage (VOC)	Power
A	S4SW3.0-50-48-400	48V	60-90V	400W	3.0m³/h	50m	1.25"	2m	<100(150)V	≥1.3*PUMP POWER
B	S4SW3.0-80-72-600	72V	90-120V	600W	3.0m³/h	80m	1.25"	2m	<150(200)V	≥1.3*PUMP POWER
C	S4SW3.0-100-72(96)-750	72(96)V	90-150V (150-200V)	750W	3.0m³/h	100m	1.25"	2m	<150(200)V	≥1.3*PUMP POWER
D	S4SW3.0-125-96(120)-900	96(120)V	110-150V (180-250V)	900W	3.0m³/h	125m	1.25"	2m	<200(300)V	≥1.3*PUMP POWER
E	S4SW3.0-140-110(150)-1100	110(200)V	110-150V (200-300V)	1100W	3.0m³/h	140m	1.25"	2m	<200(350)V	≥1.3*PUMP POWER
F	S4SW3.0-170-110(200)-1500	110(200)V	110-150V (200-300V)	1500W	3.0m³/h	170m	1.25"	2m	<200(400)V	≥1.3*PUMP POWER
G	S4SW3.0-260-300-2200	300V	300-400V	2200W	3.0m³/h	260m	1.25"	2m	<450V	≥1.3*PUMP POWER

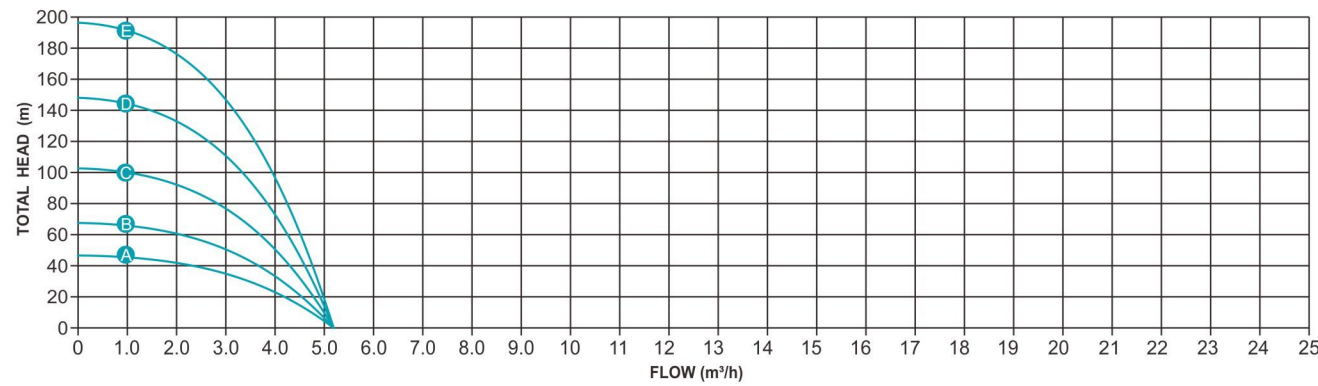
S4SW Solar Submersible Pump



S4SW Solar Submersible Pump

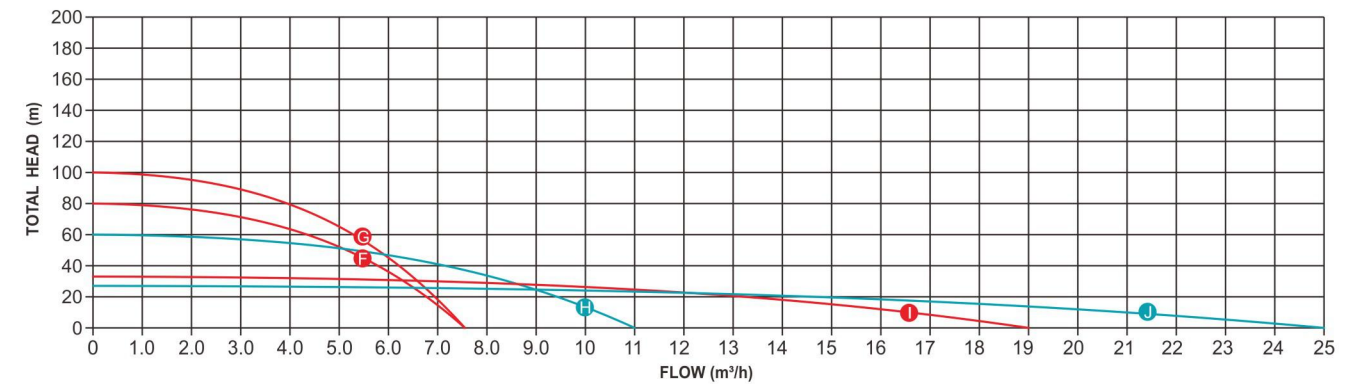


Performance Curve And Table



No.	Model	Voltage	Optimum input voltage(DC)	Power	Max. flow	Max. head	Outlet	Cable	Solar panel	
									Open circuit voltage (VOC)	Power
A	S4SW5.2-45-48(72)-500	48(72)V	60-90V (72-120V)	500W	5.2m³/h	45m	1.25"	2m	<100(150)V	≥1.3*PUMP POWER
B	S4SW5.2-67-72(96)-750	72(96)V	90-120V (110-150V)	750W	5.2m³/h	67m	1.25"	2m	<150(200)V	≥1.3*PUMP POWER
C	S4SW5.2-101-110(150)-1100	110(150)V	110-150V (150-200V)	1100W	5.2m³/h	101m	1.25"	2m	<200(300)V	≥1.3*PUMP POWER
D	S4SW5.2-146-110(180)-1300	110(180)V	110-150V (180-250V)	1300W	5.2m³/h	146m	1.25"	2m	<200(350)V	≥1.3*PUMP POWER
E	S4SW5.2-198-110(200)-1500	110(200)V	110-150V (200-300V)	1500W	5.2m³/h	198m	1.25"	2m	<200(400)V	≥1.3*PUMP POWER
F	S4SW5.2-255-300-2200	300V	300-400V	2200W	5.2m³/h	255m	1.25"	2m	<450V	≥1.3*PUMP POWER

Performance Curve And Table

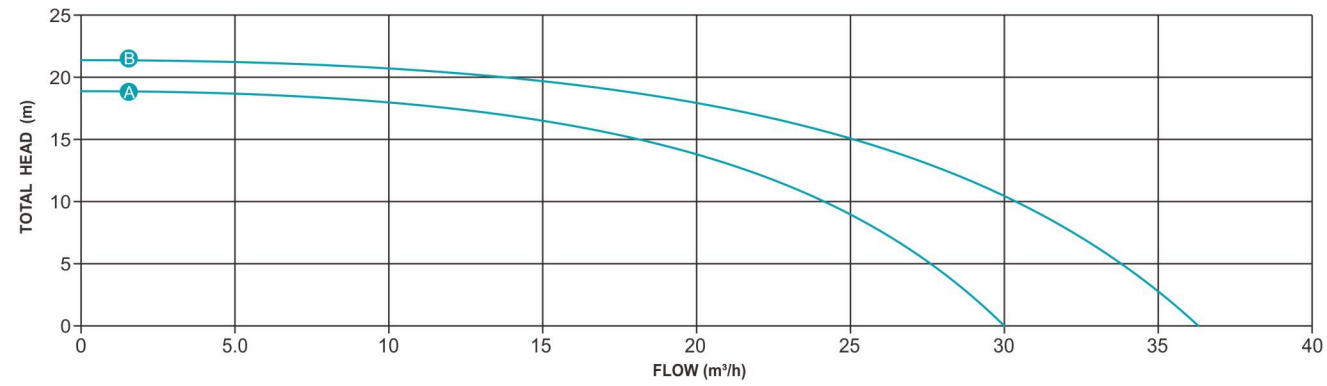


No.	Model	Voltage	Optimum input voltage(DC)	Power	Max. flow	Max. head	Outlet	Cable	Solar panel	
									Open circuit voltage (VOC)	Power
G	S4SW7.5-80-110(180)-1300	110(180)V	110-150V (180-250V)	1300W	7.5m³/h	80m	1.25"	2m	<200(350)V	≥1.3*PUMP POWER
H	S4SW7.5-100-110(200)-1500	110(200)V	110-150V (200-300V)	1500W	7.5m³/h	100m	1.25"	2m	<200(400)V	≥1.3*PUMP POWER
I	S4SW7.5-150-300-2200	300V	300-400V	2200W	7.5m³/h	150m	1.25"	2m	<450V	≥1.3*PUMP POWER
J	S4SW11-60-110(200)-1500	110(200)V	110-150V (200-300V)	1500W	11m³/h	60m	2"	2m	<200(400)V	≥1.3*PUMP POWER
K	S4SW19-35-110(200)-1500	110(200)V	110-150V (200-300V)	1500W	19m³/h	35m	2"	2m	<200(400)V	≥1.3*PUMP POWER
L	S4SW25-26-110(200)-1500	110(200)V	110-150V (200-300V)	1500W	25m³/h	26m	2"	2m	<200(400)V	≥1.3*PUMP POWER

S4/6SW Solar Submersible Pump



Performance Curve And Table



No.	Model	Voltage	Optimum input voltage(DC)	Power	Max. flow	Max. head	Outlet	Cable	Solar panel	
									Open circuit voltage (VOC)	Power
A	S4/6SW30-19-110(150)-1100	110(150)V	110-150V (200-300V)	1100W	30m³/h	19m	3"	2m	<200(300)V	≥1.3*PUMP POWER
B	S4/6SW36-22-110(200)-1500	110(200)V	110-150V (150-200V)	1500W	36m³/h	22m	3"	2m	<200(400)V	≥1.3*PUMP POWER
C	S4/6SW36-38-300-2200	300V	300-400V	2200W	36m³/h	38m	3"	2m	<450V	≥1.3*PUMP POWER